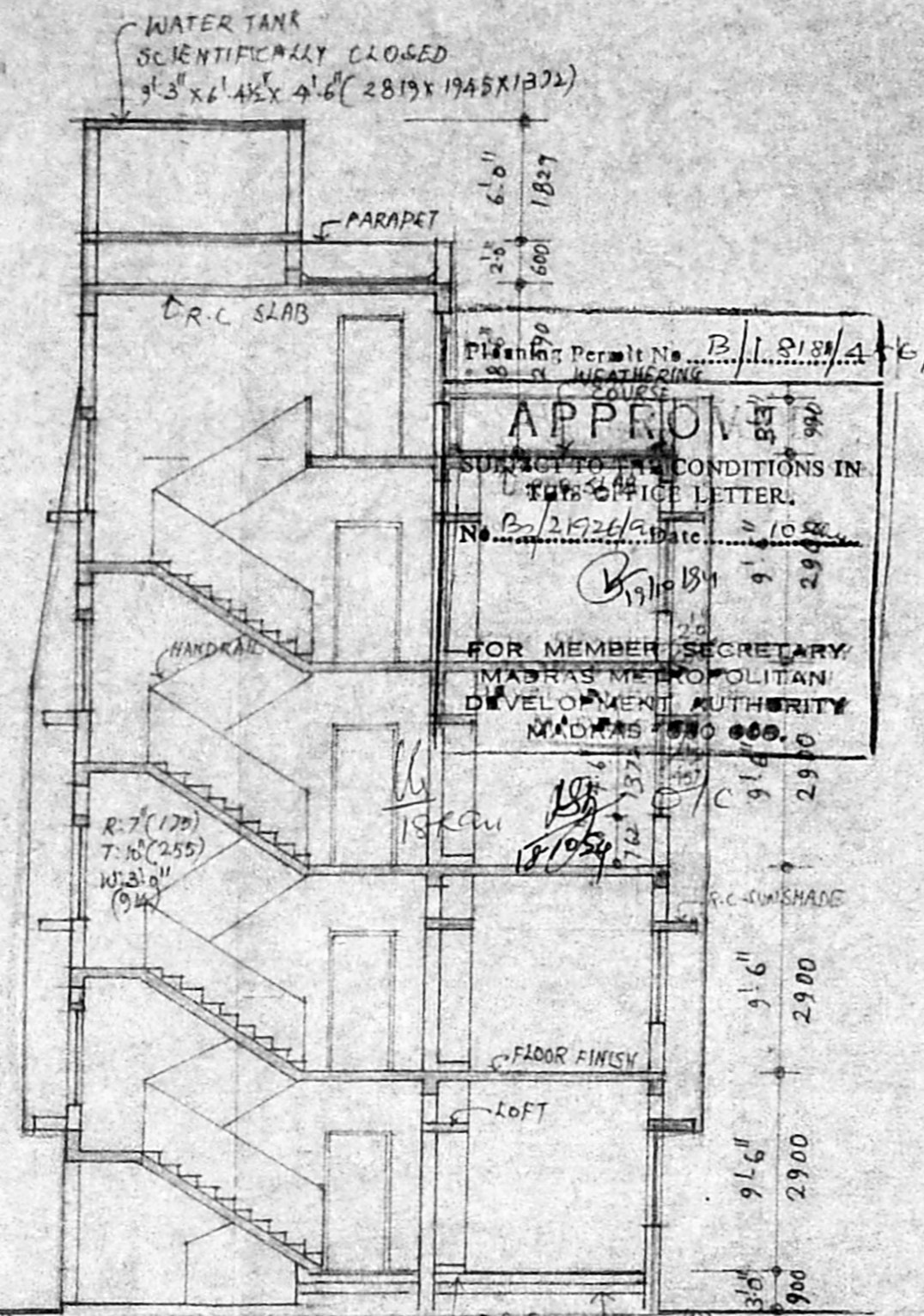
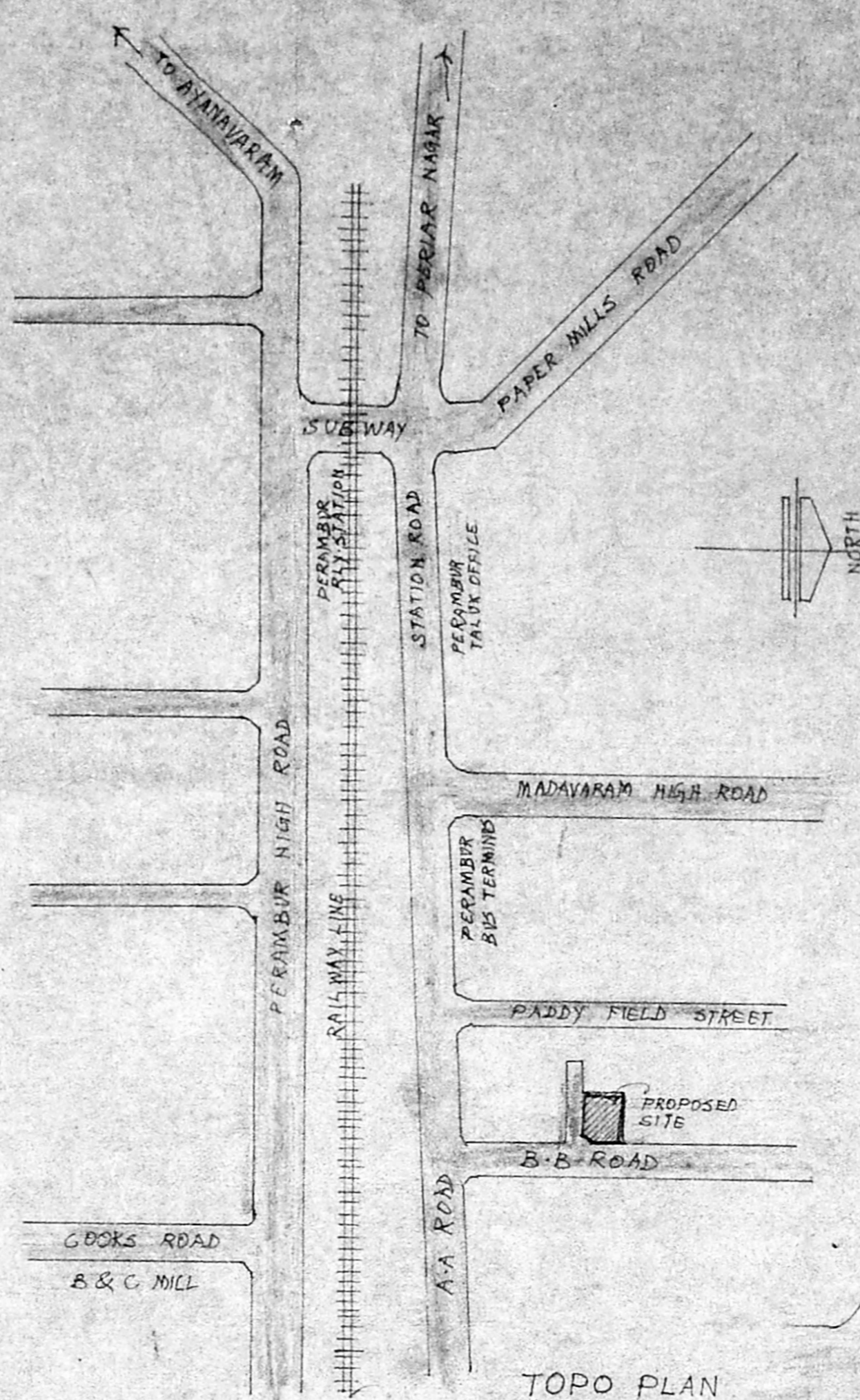


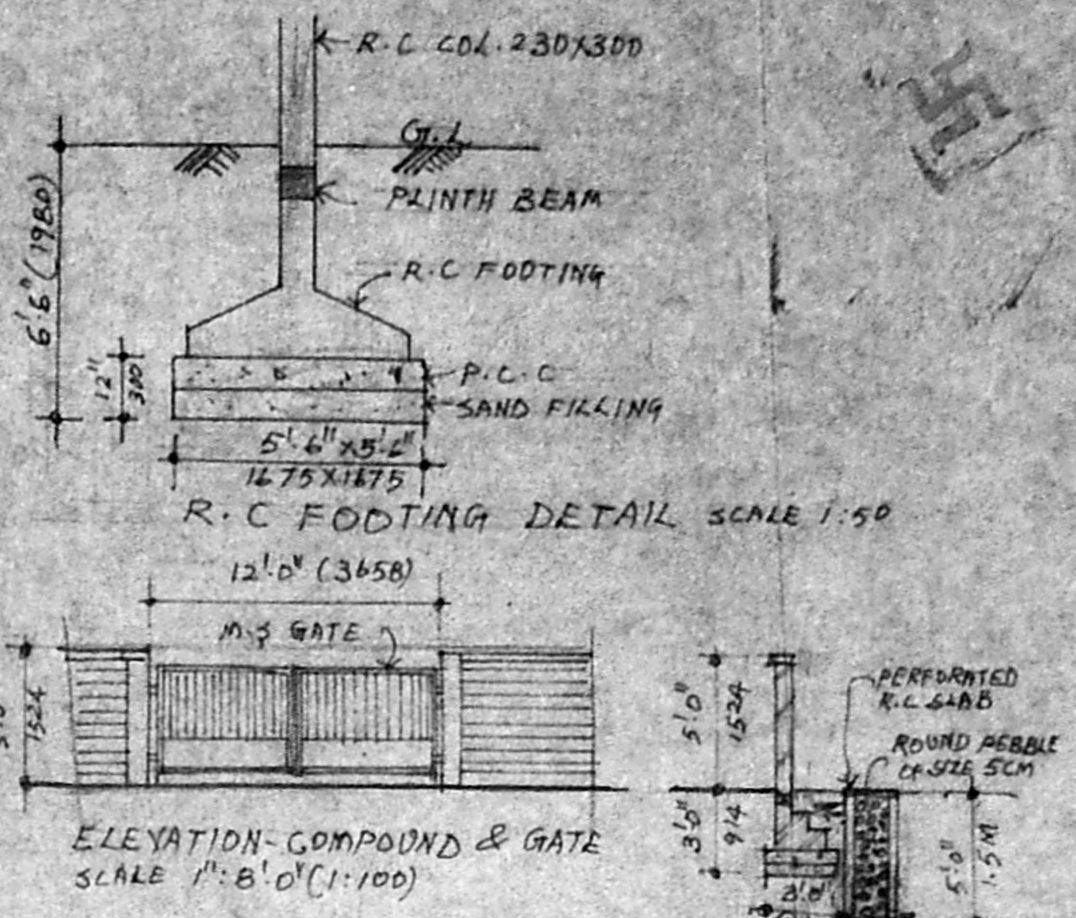
FRONT ELEVATION
SCALE 1" = 8' 0" (1:100)



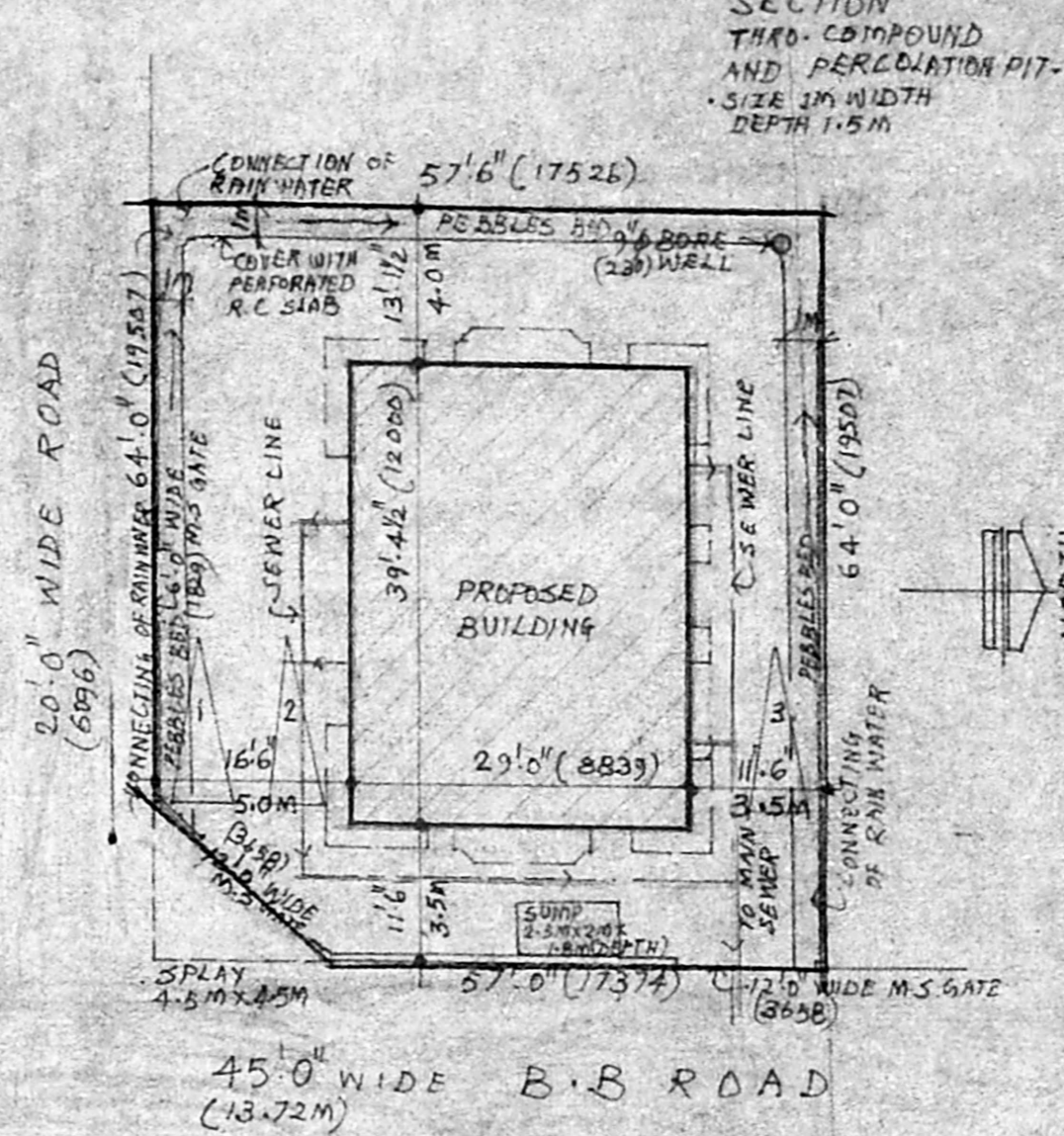
SECTION A-A
SCALE 1" = 8' 0" (1:100)



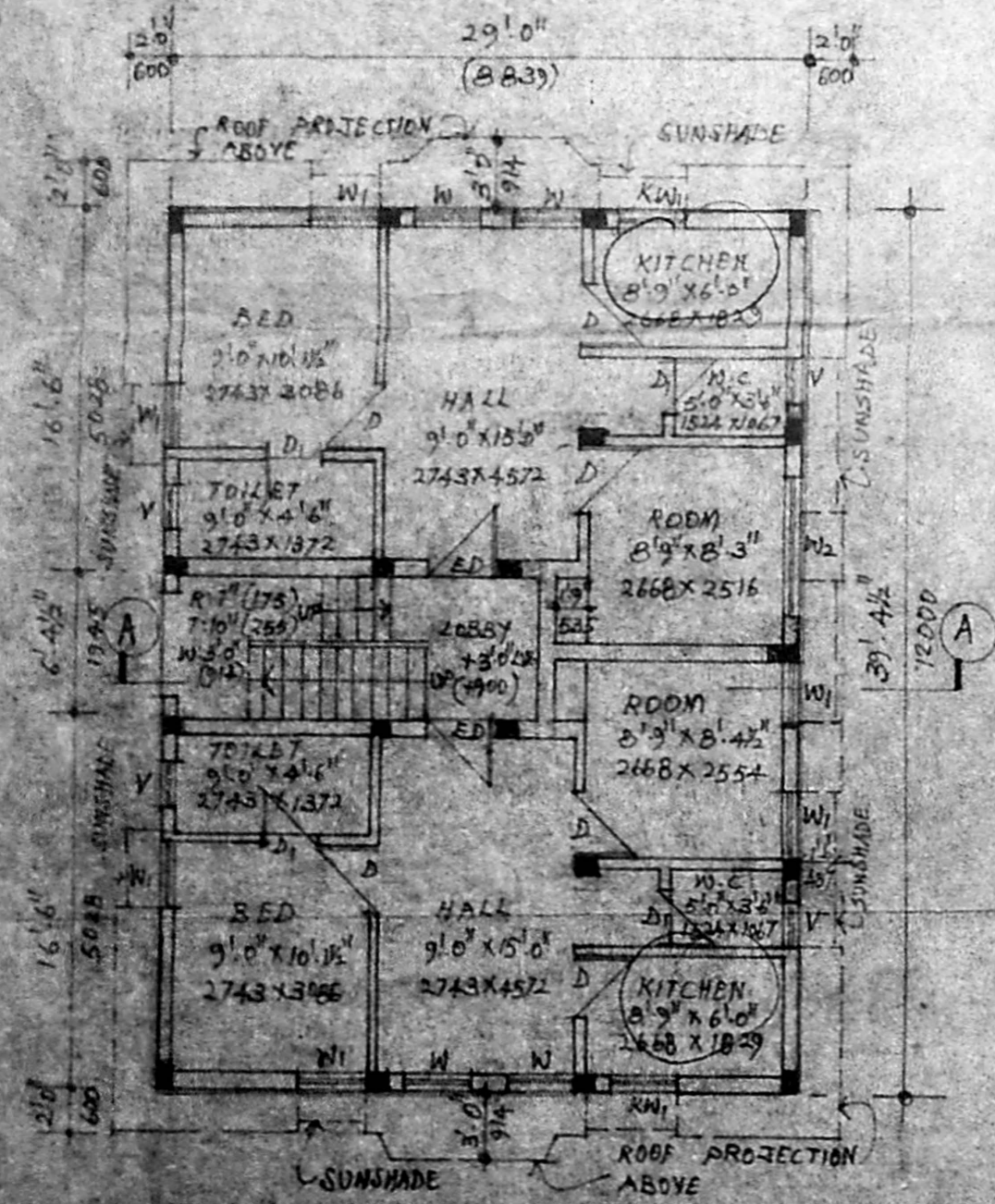
TOPO PLAN
NOT TO SCALE



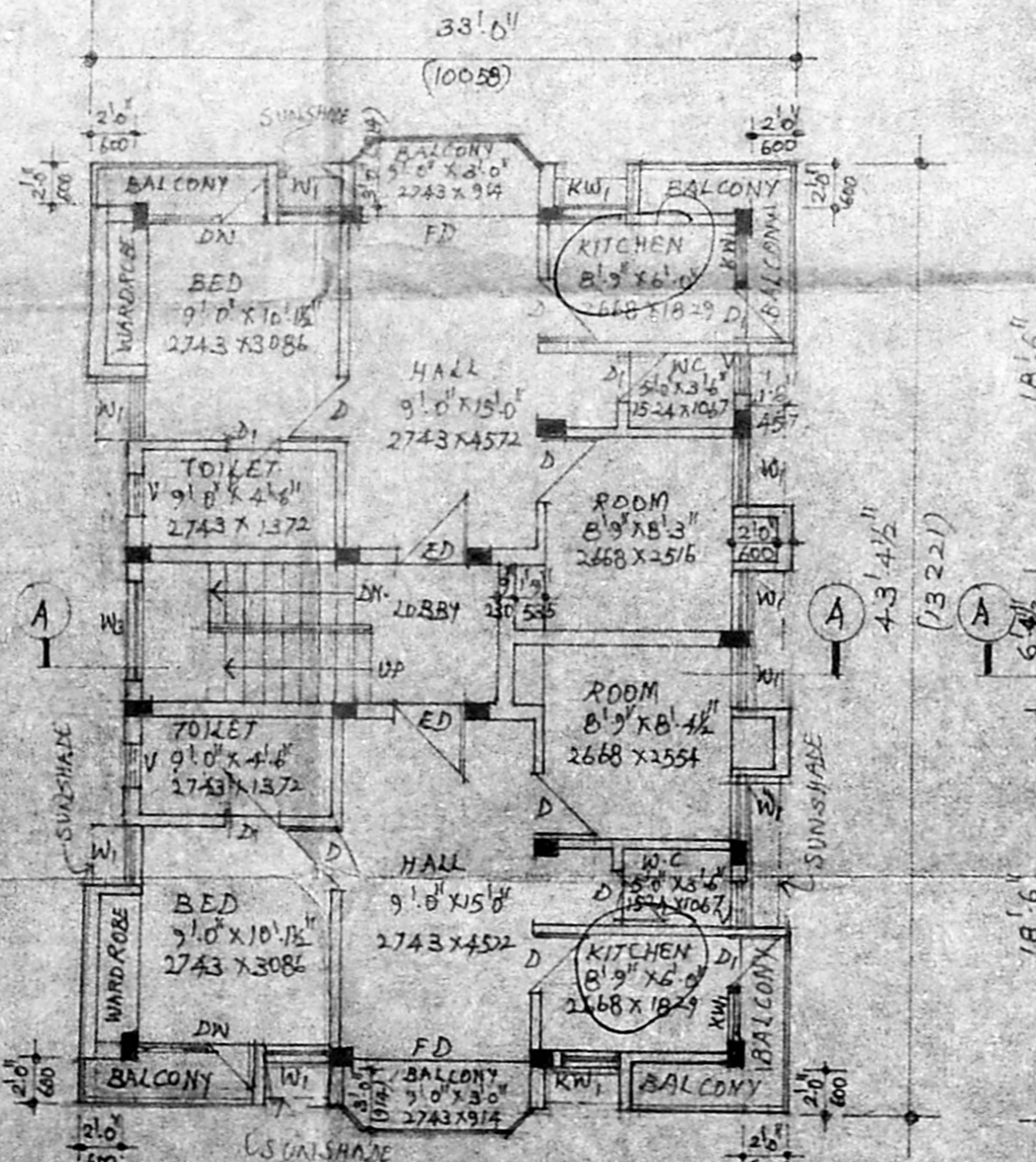
ELEVATION-COMPOUND & GATE
SCALE 1" = 8' 0" (1:100)



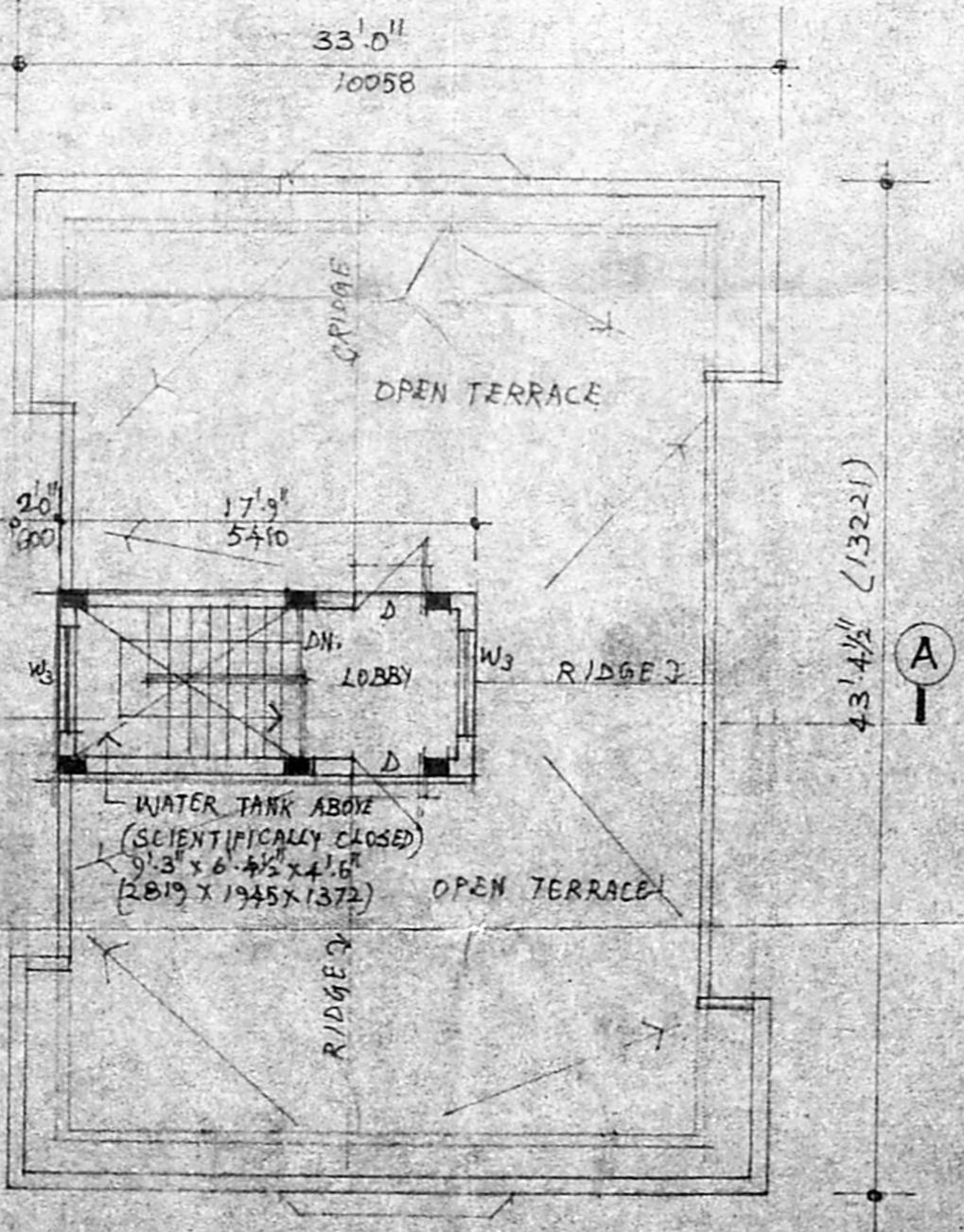
SITE PLAN
SCALE 1" = 16' 0" (1:200)



GROUND FLOOR PLAN
SCALE 1" = 8' 0" (1:100)



TYPICAL FLOOR PLAN (FIRST, SECOND & THIRD)
SCALE 1" = 8' 0" (1:100)



TERRACE FLOOR PLAN
SCALE 1" = 8' 0" (1:100)

SCHEDULE OF OPENINGS	
TYPE	REVISIONS
ED	3' 6" x 7' 0" (1067 x 2134) ENTRANCE PANELLED DOOR
D	3' 0" x 7' 0" (914 x 2134) WOODEN FLUSH DOOR
D1	2' 6" x 7' 0" (762 x 2134) WOODEN PANELLED DOOR
FD	8' 0" x 7' 0" (2438 x 2134) FRENCH DOOR WITH GLAZING
W	3' 0" x 6' 6" (914 x 1980) WOODEN GLAZED WINDOW
W1	3' 0" x 4' 6" (914 x 1397) - DD -
KW1	3' 0" x 3' 6" (914 x 1067) B3/603/94 -
W2	2' 0" x 4' 6" (609 x 1397) - DD -
W3	2' 0" x 4' 6" (609 x 1397) - DD -
W4	2' 0" x 4' 6" (609 x 1397) - DD -
W5	2' 0" x 4' 6" (609 x 1397) - DD -
W6	2' 0" x 4' 6" (609 x 1397) - DD -
W7	2' 0" x 4' 6" (609 x 1397) - DD -
W8	2' 0" x 4' 6" (609 x 1397) - DD -
W9	2' 0" x 4' 6" (609 x 1397) - DD -
W10	2' 0" x 4' 6" (609 x 1397) - DD -
W11	2' 0" x 4' 6" (609 x 1397) - DD -
W12	2' 0" x 4' 6" (609 x 1397) - DD -
W13	2' 0" x 4' 6" (609 x 1397) - DD -
W14	2' 0" x 4' 6" (609 x 1397) - DD -
W15	2' 0" x 4' 6" (609 x 1397) - DD -
W16	2' 0" x 4' 6" (609 x 1397) - DD -
W17	2' 0" x 4' 6" (609 x 1397) - DD -
W18	2' 0" x 4' 6" (609 x 1397) - DD -
W19	2' 0" x 4' 6" (609 x 1397) - DD -
W20	2' 0" x 4' 6" (609 x 1397) - DD -
W21	2' 0" x 4' 6" (609 x 1397) - DD -
W22	2' 0" x 4' 6" (609 x 1397) - DD -
W23	2' 0" x 4' 6" (609 x 1397) - DD -
W24	2' 0" x 4' 6" (609 x 1397) - DD -
W25	2' 0" x 4' 6" (609 x 1397) - DD -
W26	2' 0" x 4' 6" (609 x 1397) - DD -
W27	2' 0" x 4' 6" (609 x 1397) - DD -
W28	2' 0" x 4' 6" (609 x 1397) - DD -
W29	2' 0" x 4' 6" (609 x 1397) - DD -
W30	2' 0" x 4' 6" (609 x 1397) - DD -
W31	2' 0" x 4' 6" (609 x 1397) - DD -
W32	2' 0" x 4' 6" (609 x 1397) - DD -
W33	2' 0" x 4' 6" (609 x 1397) - DD -
W34	2' 0" x 4' 6" (609 x 1397) - DD -
W35	2' 0" x 4' 6" (609 x 1397) - DD -
W36	2' 0" x 4' 6" (609 x 1397) - DD -
W37	2' 0" x 4' 6" (609 x 1397) - DD -
W38	2' 0" x 4' 6" (609 x 1397) - DD -
W39	2' 0" x 4' 6" (609 x 1397) - DD -
W40	2' 0" x 4' 6" (609 x 1397) - DD -
W41	2' 0" x 4' 6" (609 x 1397) - DD -
W42	2' 0" x 4' 6" (609 x 1397) - DD -
W43	2' 0" x 4' 6" (609 x 1397) - DD -
W44	2' 0" x 4' 6" (609 x 1397) - DD -
W45	2' 0" x 4' 6" (609 x 1397) - DD -
W46	2' 0" x 4' 6" (609 x 1397) - DD -
W47	2' 0" x 4' 6" (609 x 1397) - DD -
W48	2' 0" x 4' 6" (609 x 1397) - DD -
W49	2' 0" x 4' 6" (609 x 1397) - DD -
W50	2' 0" x 4' 6" (609 x 1397) - DD -
W51	2' 0" x 4' 6" (609 x 1397) - DD -
W52	2' 0" x 4' 6" (609 x 1397) - DD -
W53	2' 0" x 4' 6" (609 x 1397) - DD -
W54	2' 0" x 4' 6" (609 x 1397) - DD -
W55	2' 0" x 4' 6" (609 x 1397) - DD -
W56	2' 0" x 4' 6" (609 x 1397) - DD -
W57	2' 0" x 4' 6" (609 x 1397) - DD -
W58	2' 0" x 4' 6" (609 x 1397) - DD -
W59	2' 0" x 4' 6" (609 x 1397) - DD -
W60	2' 0" x 4' 6" (609 x 1397) - DD -
W61	2' 0" x 4' 6" (609 x 1397) - DD -
W62	2' 0" x 4' 6" (609 x 1397) - DD -
W63	2' 0" x 4' 6" (609 x 1397) - DD -
W64	2' 0" x 4' 6" (609 x 1397) - DD -
W65	2' 0" x 4' 6" (609 x 1397) - DD -
W66	2' 0" x 4' 6" (609 x 1397) - DD -
W67	2' 0" x 4' 6" (609 x 1397) - DD -
W68	2' 0" x 4' 6" (609 x 1397) - DD -
W69	2' 0" x 4' 6" (609 x 1397) - DD -
W70	2' 0" x 4' 6" (609 x 1397) - DD -
W71	2' 0" x 4' 6" (609 x 1397) - DD -
W72	2' 0" x 4' 6" (609 x 1397) - DD -
W73	2' 0" x 4' 6" (609 x 1397) - DD -
W74	2' 0" x 4' 6" (609 x 1397) - DD -
W75	2' 0" x 4' 6" (609 x 1397) - DD -
W76	2' 0" x 4' 6" (609 x 1397) - DD -
W77	2' 0" x 4' 6" (609 x 1397) - DD -
W78	2' 0" x 4' 6" (609 x 1397) - DD -
W79	2' 0" x 4' 6" (609 x 1397) - DD -
W80	2' 0" x 4' 6" (609 x 1397) - DD -
W81	2' 0" x 4' 6" (609 x 1397) - DD -
W82	2' 0" x 4' 6" (609 x 1397) - DD -
W83	2' 0" x 4' 6" (609 x 1397) - DD -
W84	2' 0" x 4' 6" (609 x 1397) - DD -
W85	2' 0" x 4' 6" (609 x 1397) - DD -
W86	2' 0" x 4' 6" (609 x 1397) - DD -
W87	2' 0" x 4' 6" (609 x 1397) - DD -
W88	2' 0" x 4' 6" (609 x 1397) - DD -
W89	2' 0" x 4' 6" (609 x 1397) - DD -
W90	2' 0" x 4' 6" (609 x 1397) - DD -
W91	2' 0" x 4' 6" (609 x 1397) - DD -
W92	2' 0" x 4' 6" (609 x 1397) - DD -
W93	2' 0" x 4' 6" (609 x 1397) - DD -
W94	2' 0" x 4' 6" (609 x 1397) - DD -
W95	2' 0" x 4' 6" (609 x 1397) - DD -
W96	2' 0" x 4' 6" (609 x 1397) - DD -
W97	2' 0" x 4' 6" (609 x 1397) - DD -
W98	2' 0" x 4' 6" (609 x 1397) - DD -
W99	2' 0" x 4' 6" (609 x 1397) - DD -
W100	2' 0" x 4' 6" (609 x 1397) - DD -

SPECIFICATIONS:

- FOUNDATION: R.C COLUMN FOUNDATION OVER A BED OF R.C 1:4:8 WITH SAND CUSHION AT BOTTOM.
- SUPER-STRUCTURE: 9" 84% (230.215) TH. BK WALLS IN CM 1:5 AND PLASTERED WITH CM 1:4
- FLOORING: MOSAIC FLOORING
- R.C WORKS: R.C COLUMNS, BEAMS; LINTELS, SUNSHADES AND SLAB WITH SUITABLE REINFORCEMENT.
- WEATHERING COURSE: ONE SET OF PRESSED TILES LAID OVER A BRICK JELLY LINE CONC. MIXED WITH CRUDE OIL LAID TO SLOPE AND POINTED WITH THE SAME OIL MIXED MORTAR.
- WATER TANK - SCIENTIFICALLY CLOSED.

COLOUR CODE REFERENCE

- PROPOSED WORK
- EXISTING ROAD
- PLOT OUTLINE
- SEWER LINE

M.S. KUMAR
POWER AGENT

BALUJICA
R.A. NO. 309
14, Palani Anandur Street,
Radha Nagar, Chrompet,
Madras-600 044.

PROPOSED FLATS AT
DOOR NO: 90 ; R-S NO: 474/6 ;
BLOCK NO: 25 AT B.B ROAD
PERAMBUR MADRAS.